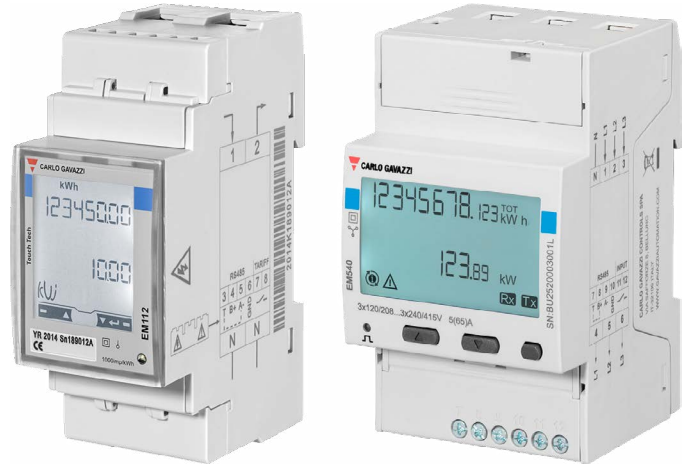


PoolCop

ENERGY METER IoT



Monophase

Multiphase

UNDERSTAND, ANALYZE AND OPTIMIZE ENERGY CONSUMPTION

Associating this energy meter with a PoolCop Evolution or PoolCop Genesis gives you all the data you need to run a pool efficiently, reduce energy consumption, and respond quickly to problems that could easily go unnoticed.

Abnormal energy consumption is an early sign of worn or malfunctioning equipment. The energy meter precisely reads and records the exact amount of power consumed by all the connected equipment in real time, and relays the data to the PoolCop Cloud and BigPool database for storage, analysis and display.

A real ally for professionals observing pool behaviour from a distance, the data provides immediate visibility to poor functioning or damaged equipment. It is effectively an early warning system indicating when intervention is required.

Pool owners will see the positive effects of running their swimming pool with an intelligent system to reduce their electricity consumption, thanks to the data recorded by the energy meter.

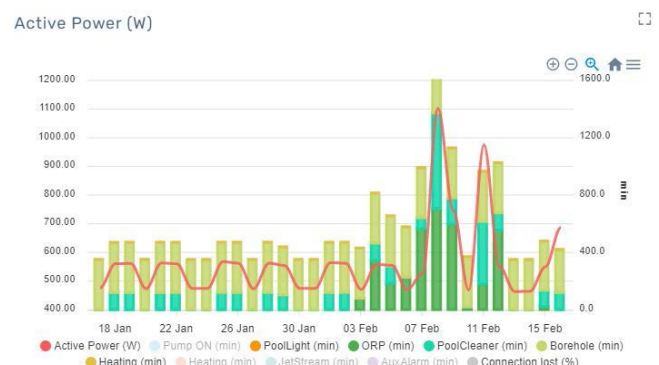


PRODUCT ADVANTAGES

- Monophase and multiphase versions
- Up to 100 ACC in current measurements (monophase)
- Up to 65 ACC in current measurements (multiphase)
- Modbus connection
- Continual real time data readings
- Backlight LCD with integrated touch key-pad



Immediate visibility of the electrical consumption of a pool in comparison to the global household consumption.





TECHNICAL SPECIFICATIONS

Energy Meter IoT Monophase

Energy Meter IoT Multiphase

REFERENCE	AC5610	AC5620
DIRECT CURRENT MEASUREMENT	Up to 100 AAC	Up to 65 AAC
PACK CONTENTS	<ul style="list-style-type: none"> • Energy meter • Connection cable, 4 meters 	
GUARANTEE	24 months	
DISPLAY AND ENERGY ANALYSIS	Via PoolCop Cloud	
POOLCOP FIRMWARE, MINIMUM REQUIRED	V44.0	
COMMUNICATION WITH POOLCOP	RS485 ModBus	
NUMBER OF PHASES	Single phase	Two or three phase
RATED VOLTAGE	230 VLN AC	L-N 120 to 300 VLL AC L-L 208 to 400 VLL AC
MOUNT DIMENSIONS	DIN 2 modules	DIN 3 modules
ENERGY MEASUREMENT	kWh	kWh per phase
SYSTEM AND PHASE VARIABLES ON THE EM	kW, kvar, V, A, PF, Hz, kWdmd, kWdmd peak	kW, kvar, kVA, VLL, VLN PF, Hz, kWdmd, kWdmd peak kW, kvar, kVA, VLL, VLN, A, PF
DISPLAY, CONTROL	Backlit LCD, integrated touch key-pad	
ENERGY READOUT, VARIABLE READOUT	8 digit; 4 digit	
ACCURACY	±0.5% RDG (current/voltage)	
CLASS 1 (kWh)	EN62053-21	
CLASS B (kWh)	EN50470-3	
PROTECTION	IP51 (front)	
COMPLIANCE, ACCREDITATION, CERTIFICATION	CE, UKCA, UL	
INSTALLATION COMPATIBILITY	PoolCop Evolution, PoolCop Genesis, PoolCop Genesis Panel New construction, renovation, or upgrade Residential and commercial pools and spas	

